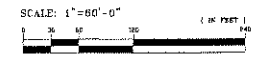


**PLANT LIST**

BOTANICAL NAME	COMMON NAME	Height	Spread	BOTANICAL NAME	COMMON NAME	BOTANICAL NAME	COMMON NAME	BOTANICAL NAME	COMMON NAME
<b>TREES:</b>				<b>PALM TREES:</b>		<b>SHRUBS:</b>		<b>ORNAMENTAL GRASSES:</b>	
<i>Suboptia floribunda</i>	White Ironwood	35-40'	25'	<i>Phoenix caroliniana</i>	Lemon Verbena (aka Palm)	60"	<i>Desert Olive-aka-Nile</i>	<i>Composita 6' Spike</i>	Fragrant Reed Grass
<i>Livistona rotunda</i>	Fractal Palm	35-60'	30'	<i>Syagusa radiozylindrica</i>	Queen Palm	50"	<i>Lilo-aka-Rio-Rio</i>	<i>Corea 4' Street Light</i>	Sage
<i>Ficus 6' Tree-aka-Box</i>	Sagepod Tree	42'	30'				<i>Blue Hibiscus</i>	<i>Freesia 4' Shrub</i>	Blue Fescue
<i>Leucodermis fortuneana</i>	Golden Ironwood	35-50'	20'-40'	<b>BAMBOOS:</b>			<i>Impatiens Pink</i>	<i>Helleborus scaberrimus</i>	Blue Oat Grass
<i>Acrocalymma scopulorum</i>	New Zealand Christmas	35-50'	20'	<i>Phyllostachys bambusoides</i>	Golden Bamboo		<i>Muscus Orange</i>	<i>Silene acaulis</i>	Little Grass
<i>Ficus religiosa</i>	Fig	25-50'	20'	<i>Phyllostachys puberula</i>	Flower Bamboo		<i>Redhead Bush</i>	<i>Horsetail 4' Shrub</i>	Golden Grass
<i>Platanus 4' Tree-aka-Cashew</i>	London Reed Tree	40-80'	30'-40'	<i>Phyllostachys puberula</i>	"Tower" Young		<i>Pine 40' Shrub</i>	<i>Penstemon 4' Shrub</i>	Lowland Grass
<i>Rapala koronaria 'Noble'</i>	1' Laurel Catewhire	40-60'	30'-30'	<i>Hedera helix</i>	Sage		<i>Lonicera</i>	<i>Purple Heartleaf Grass</i>	
<i>Fraxinus ornata</i>	Flowering Plum	20'	20'	<b>GROUNDCOVERS:</b>			<i>Leptocarpus curviflorus</i>		
<i>Platanus 4' Tree-aka-Navel</i>	Flowering Plum	18'	12'	<i>Arenaria montana</i>	Sage Plant		<i>Carex acicularis</i>		
<i>Ficus L. 'Dixie'</i>	Granular Pear	40'	15'	<i>Capama Hill</i>	Dark Green Coriander		<i>Panicum perfoliatum</i>		
<i>Quercus agrifolia</i>	Holly Oak	40-70'	40-70'	<i>Lawsonia 'Saffron'</i>	Red Yucca		<i>Panicum spp.</i>		
<i>Quercus agrifolia</i>	Southern Live Oak	60'	60'	<i>Lepidosiphon canaliculata</i>	Waterwort		<i>Phlox paniculata</i>		
<i>Crataegus bicuspidata</i>	Bristle Oak	40'	20'	<i>Yucca filifera</i>	Small Yucca		<i>Sida acuta</i>		

**LANDSCAPE NOTES:**

1. TREES TO BE 100% 1 1/2" DBH OR 100% 1 1/2" DBH OR 100% 1 1/2" DBH OR 100% 1 1/2" DBH.
2. A WATER CONSERVING AUTOMATIC IRRIGATION SYSTEM HAS BE RELOCATED AND INSTALLED IN ACCORDANCE TO DCD'S SPECIFIC STANDARDS.



**SIERRA POINT PROJECT**  
BRISBANE, CA.



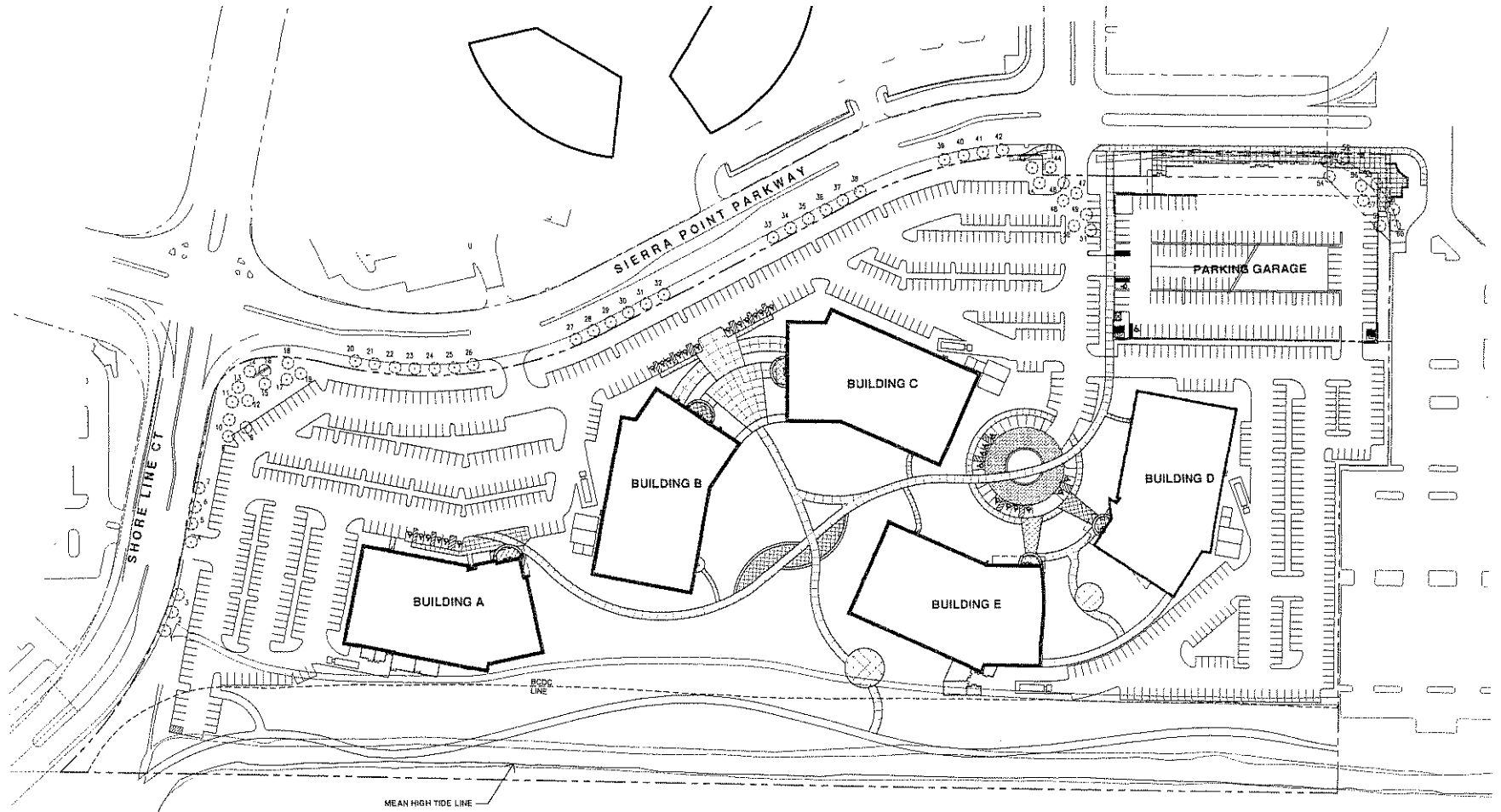
**LANDSCAPE PLAN**

REVISED 11/27/06  
REVISED 10/29/07  
REVISED 12/24/07

**L-1**



Project Number: 9619.01



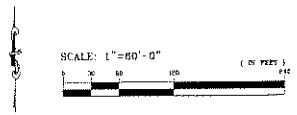
SIZE (DIA.)		SIZE (DIA.)		SIZE (DIA.)		SIZE (DIA.)		SIZE (DIA.)		SIZE (DIA.)	
12"	TP	16"	TR	20"	TP	24"	TR	28"	TP	32"	P
12"	TR	17"	TR	16"	R	17"	TR	16"	TR	13"	TR
11"	TR	16"	TR	16"	R	17"	TR	21"	TR	12"	TR
11"	R	14"	R	16"	TR	14"	TR	14"	TR	11"	TR
12"	TR	13"	TR	16"	TR	17"	TR	14"	TR	12"	TR
12"	TR	15"	R	16"	TR	17"	TR	14"	R	12"	TR
11"	TR	17"	TR	16"	TR	14"	TR	17"	TR	11"	TR
16"	TR	16"	TR	16"	TR	16"	TR	17"	R	12"	TR
21"	TR	16"	TR	21"	TR	16"	TR	13"	R	12"	TR
24"	TR	15"	TR	16"	TR	14"	TR	14"	R	12"	TR

**TREE NOTES:**

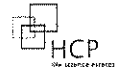
1. ALL LISTING SIZES ON SITE ARE IN INCHES.
2. DIA. OF TRUNK MEASURED AT 4' HEIGHT ABOVE GROUND.
3. TREES TO BE RELOCATED OR REMOVED SHALL BE RELOCATED AT RISK OF OWNER TO REMAIN BEST SPECIMENS POSSIBLE.

**TREE TABLE LEGEND:**

R - RELOCATE  
 TR - TO BE REMOVED  
 TP - TO BE REMOVED



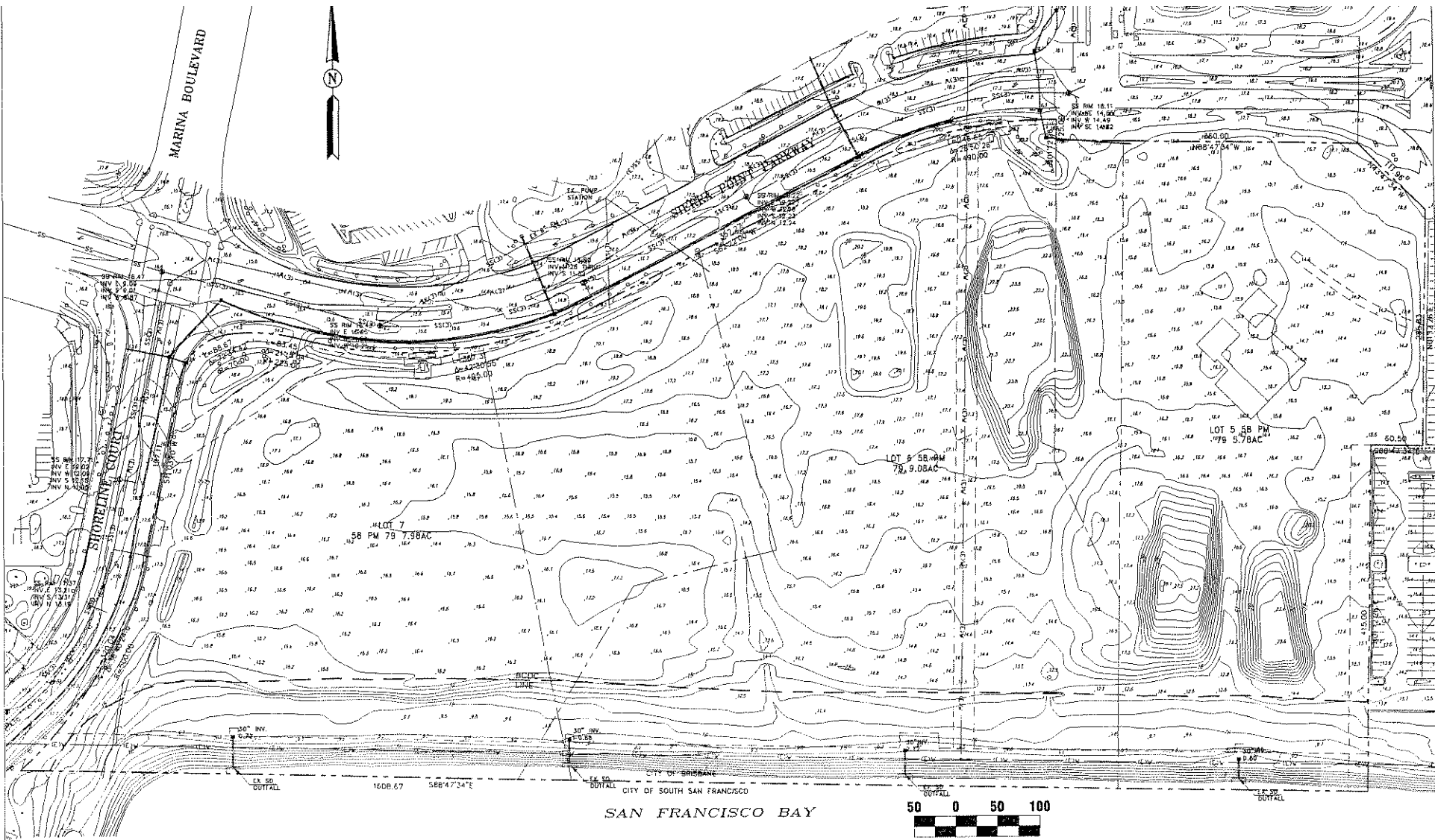
**SIERRA POINT PROJECT**  
BRISBANE, CA



**EXISTING TREE INVENTORY**

08/23/06 REVISED 12/24/07  
 REVISED 11/27/06  
 REVISED 10/28/07

**L-2** **DES**  
 Project Number: 9619.01



**SIERRA POINT PROJECT**  
BRISBANE, CA



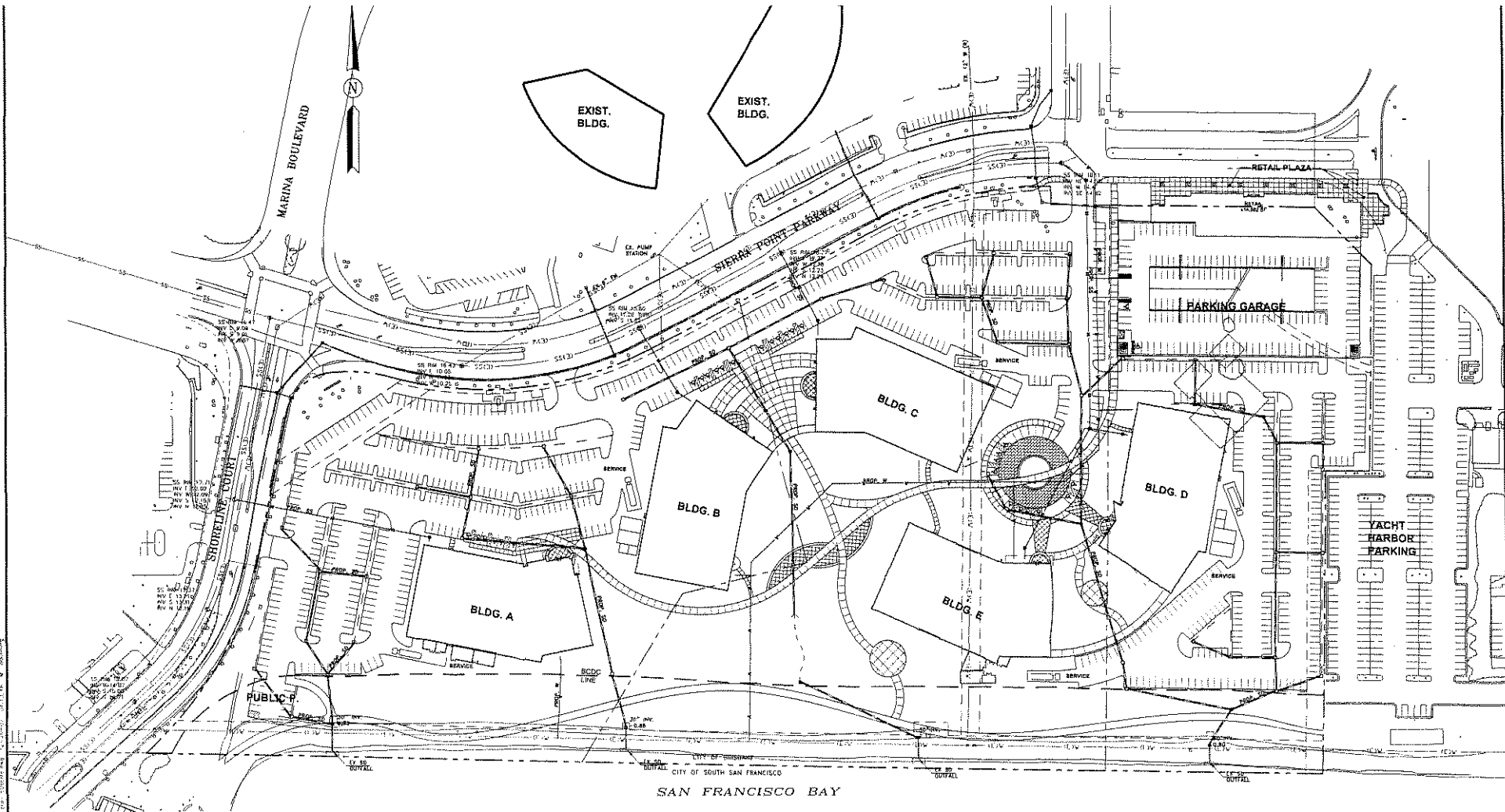
**TOPOGRAPHIC SURVEY**  
08/03/05

**C-1**



Project Number 9619.01





**SIERRA POINT PROJECT**  
BRISBANE, CA



**WILSEY HAM**  
ENGINEERING ■ PLANNING ■ SURVEYING  
593 VINTAGE PARK DRIVE, SUITE 100  
FOSTER CITY, CALIFORNIA 94404  
(650)349-2151 FAX (650)345-4921

**UTILITY PLAN**

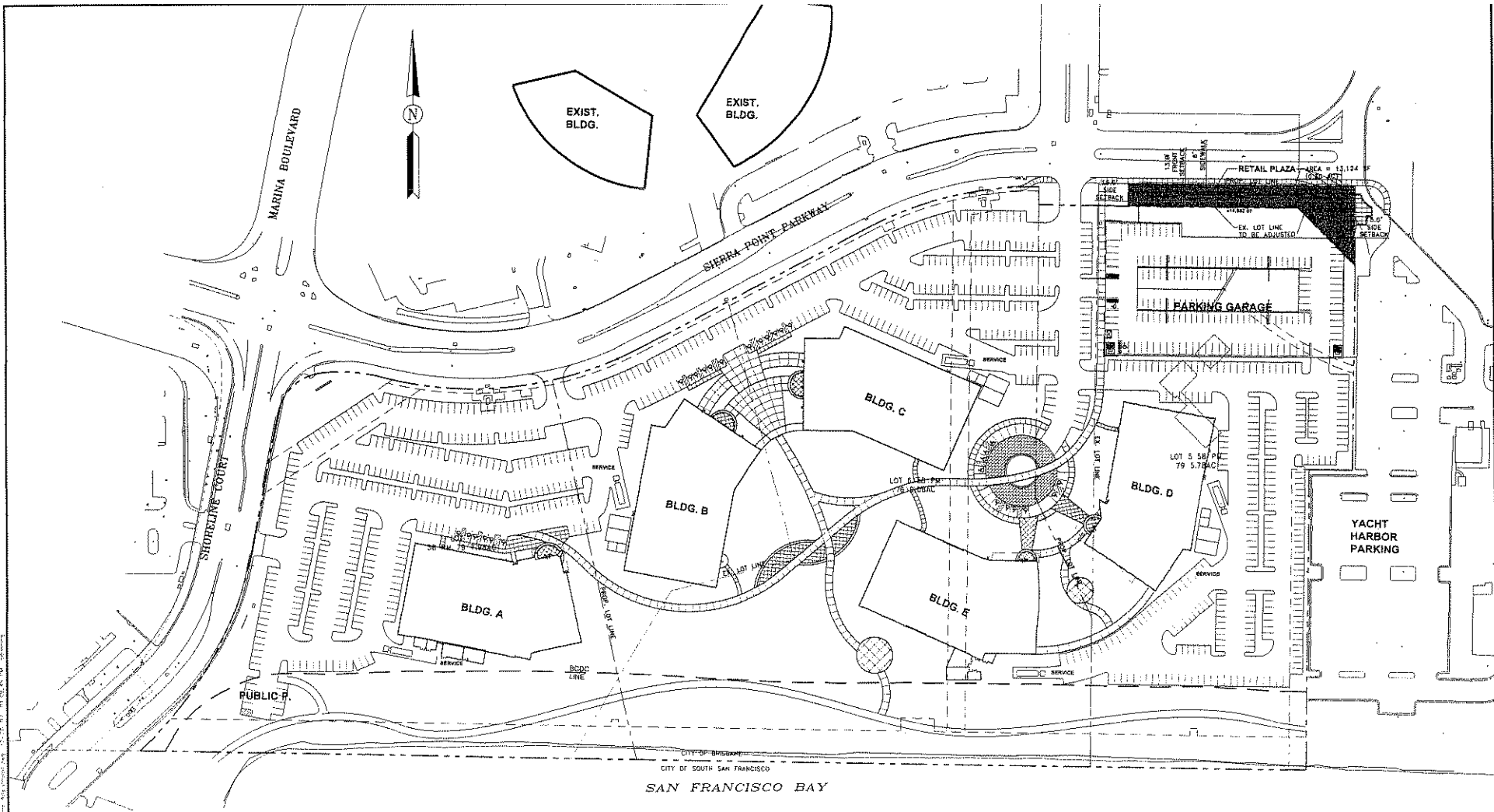
10/29/07  
12/24/07

**C-3**

Project Number: 9619.01



NOTE: STORMWATER RUNOFF WILL BE TREATED USING VARIOUS TREATMENT METHODS AND SHALL INCLUDE BIOFILTRATION AS SITE CONSTRAINTS PERMIT.



**LEGEND**  
 - - - - - EXISTING LOT LINE  
 \_\_\_\_\_ PROPOSED LOT LINE



**SIERRA POINT PROJECT**  
 BRISBANE, CA.



**WILSEY HAM**

ENGINEERING ■ PLANNING ■ SURVEYING

363 VINTAGE PARK DRIVE, SUITE 100  
 FOSTER CITY, CALIFORNIA 94404  
 (650)349-2151 FAX (650)345-4921

**LOT LINE ADJUSTMENT EXHIBIT**

10/29/07  
 12/24/07

**C-4**



Project Number 9619.01